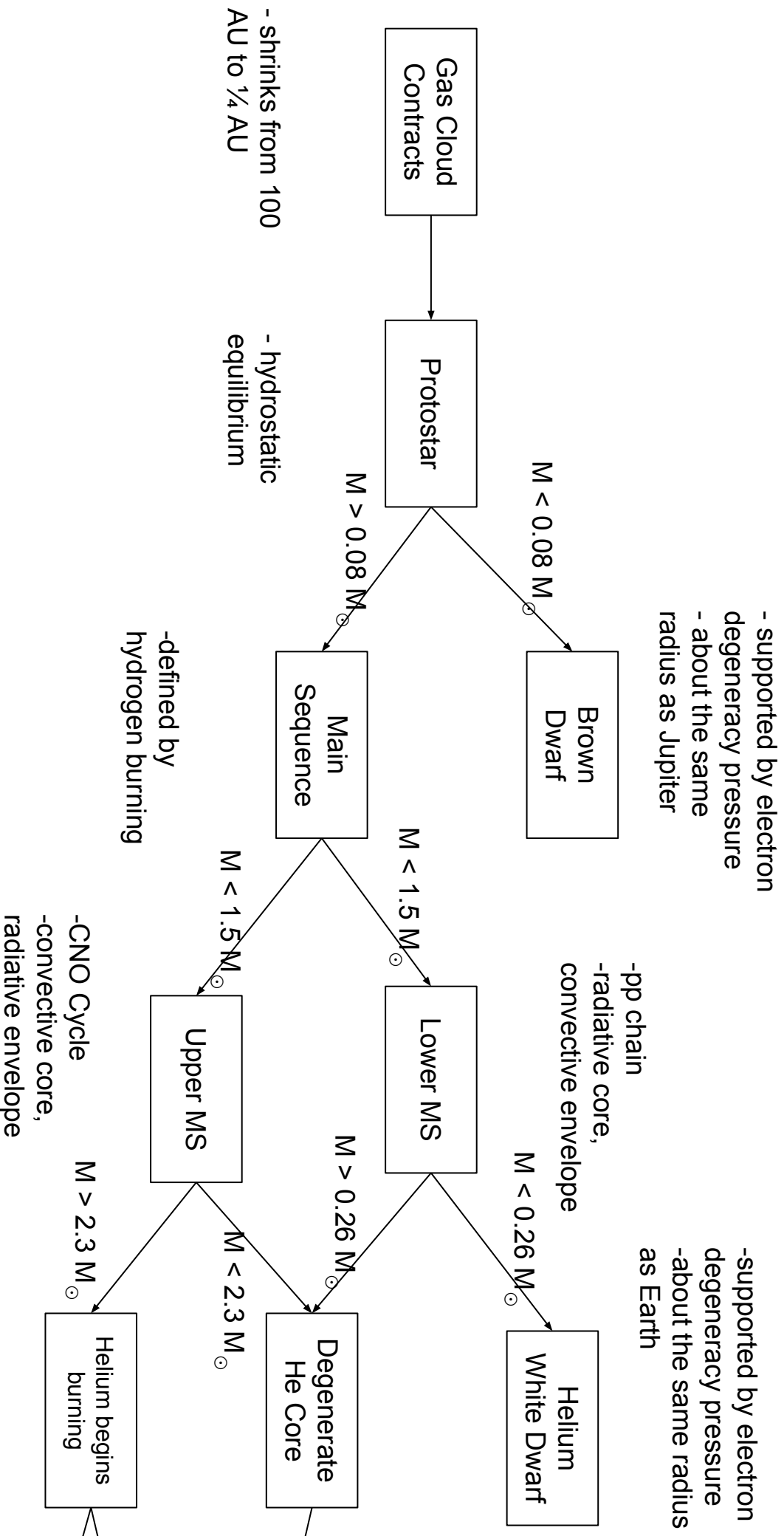


Stellar Evolution Worksheet



-helium violently begins to fuse

Helium Flash

$M < 8 M_{\odot}$

$M > 8 M_{\odot}$

C, O, Si, Mg burn to Fe

Red Giant

Supergiant

Planetary Nebula

Type II Supernova

Carbon-Oxygen White Dwarf

Neutron Star

Black Hole

-supported by electron degeneracy pressure
-about the same radius as Earth

-star gradually sheds off outer layers
-supported by neutron degeneracy pressure
-can be detected as rapidly-rotating Pulsars
-about the same radius as a city (~10 km)

-iron core contracts, outer layers bounce
Object with gravitational field so strong no matter or radiation can escape

